



# WHO IS UNIPOWER



- Founded in 1988 & Currently Owned by JMC Capital
- Purchased C&D Power System Business in 2014
- Purchased Power One Power System Business in 2015
- Customers in over 70 Countries
- Head Quarters in Coral Springs, FL
- Manufacturing Facilities – Europe, Asia, & USA





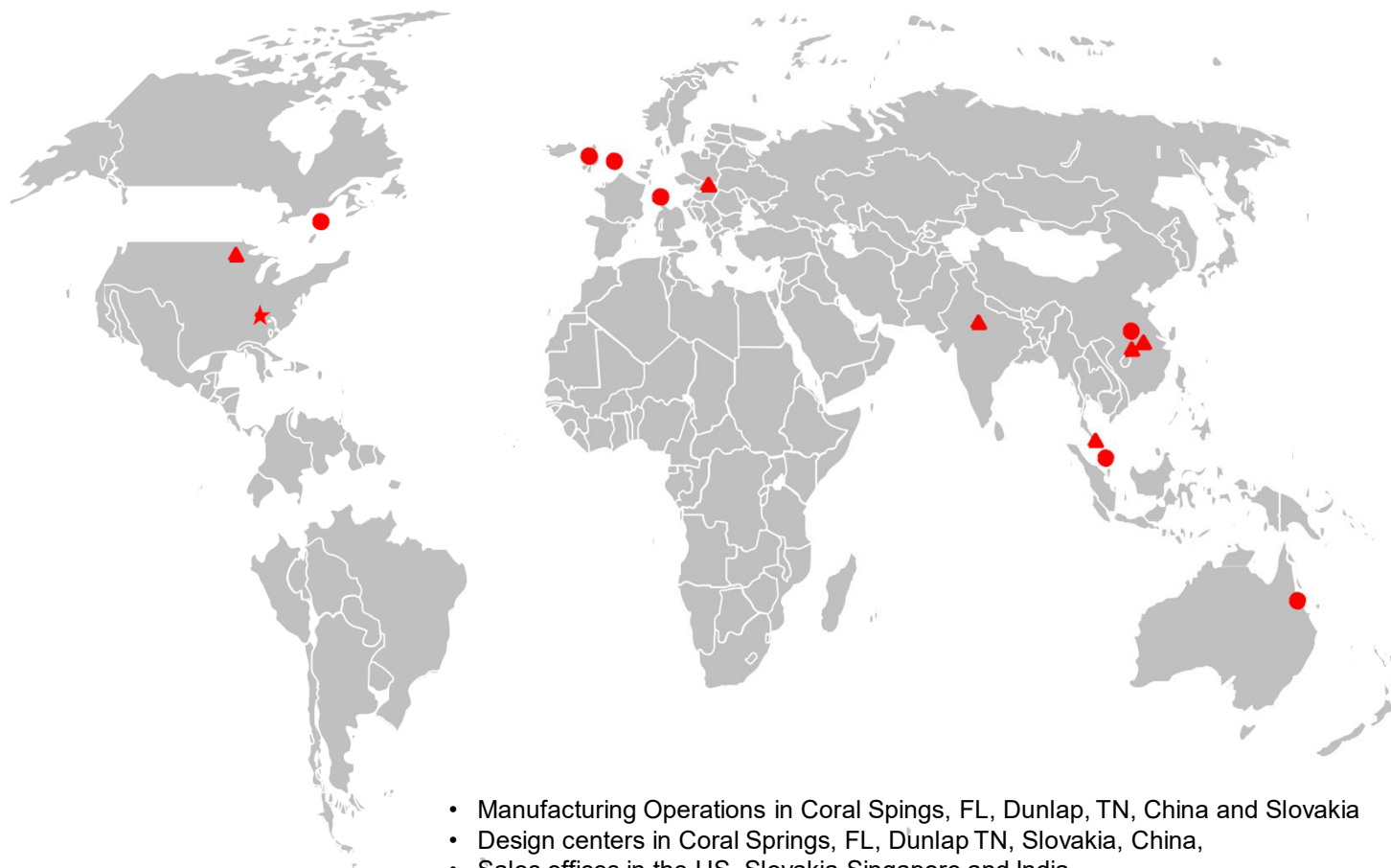
# Solutions

- DC Power Equipment
- Inverters
- Distribution Panels
- Outside Plant Cabinets
- Turnkey Solutions
  - Cabinet
  - Power & Battery
  - Installation
  - Support Service Plans



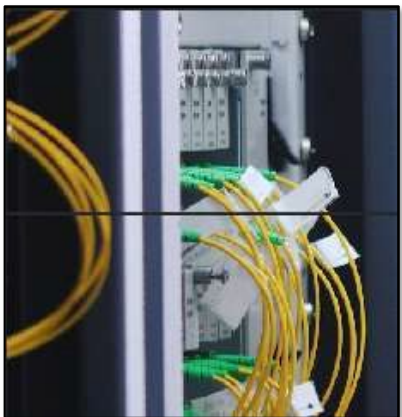


# Global Footprint





# Our Systems Markets



Wireless carriers

Wireline carriers

Data centers and data networking

Energy/Utilities

Public Safety

OEMs and System Integrators



# *Our Systems Products*

- **DC Systems**
  - 12, 24 & 48VDC
  - 75 Amp Compact Systems
  - 225 Amp Front Access System
  - 150-300 Amp Compact System
  - 400-600 Amp Cabinet System
  - Large Cabinet Systems 800A+
- **DC/DC Converters**
  - Rack Mount/Redundant
  - 48VDC and 24VDC input
- **Inverter Systems**
  - Fully Integrated 48VDC Systems up to 18kVA
  - Standalone 12, 24, 48VDC to 2kVA
  - Standalone 130VDC input to 3kVA
- **DC Distribution**
  - Pre-configured Breaker Panels
  - Pluggable/Field configurable Fuse and breaker Panels
  - 12, 24 & 48VDC
- **AC Distribution**
  - Intelligent PDUs with SNMP
  - AC Power Entry Panels with Surge Protection
  - AC Power Distribution Panels



# DC POWER SYSTEMS





## DC Power Systems

### Small Systems

#### Aspiro Family

- 1RU Systems – 19", Depth < 12";  
1 Battery & 4 Load Breakers  
(25Amps N+1)
- 2RU Systems – 19", 2 Battery  
Breakers & 8 Load Breakers  
(100Amps N+1)







## Aspiro Rectifier Options

- 3 Power Levels Available
- Wide Input AC Range
- No Power Derating up to 65°C



MODEL	PO	$\mu$	VIN	VO
XPGe12.48	1200 W	95%	90 – 300 V AC (derate <180V AC)	48 V DC
XR08.48	800 W	90%	90 – 300 V AC	48 V DC
XR04.48	400 W	90%	90 – 300 V AC	48 V DC



## DC Power Systems

### Medium Systems

#### Guardian Family

- 2RU Systems – 19", Rear Cable Access; 2 Battery Breakers (120 Amps N+1)
- 3RU Systems – 19", Rear Cable Access; 2 Battery Breakers; (240 Amps N+1)

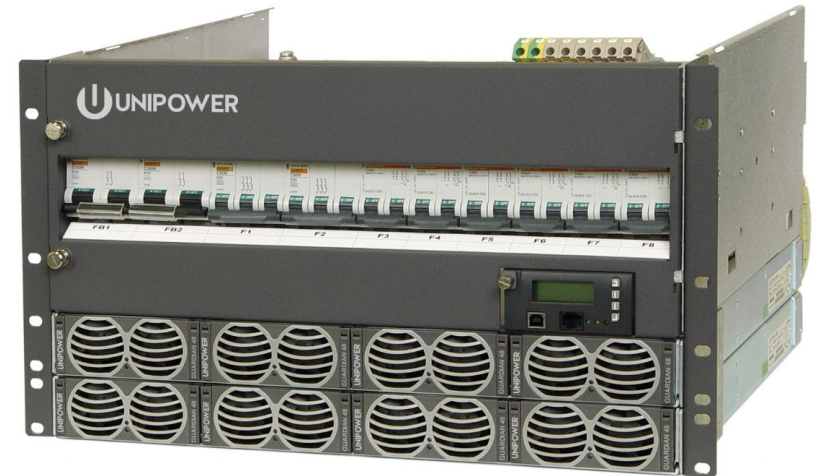




## DC Power Systems Medium Systems

Guardian 1200 & 360 Amp Plants

- Various Stackable Distribution Options (600 Amps Each)





## Guardian Rectifier Options

- 3 Power Levels Available
- No Power Derating up to 65°C
- 48VDC-24VDC Converter Options



MODEL	P <sub>O</sub>	μ	V <sub>IN</sub>	V <sub>O</sub>
FMPe20.48	2000 W	96%	85 – 300 VAC (Derate < 180VAC)	48VDC
FMPe30.48	2900 W	95%	85 – 300 VAC (Derate < 180VAC)	48 VDC
FMP25.48	2500 W	92.5%	85 – 300 VAC (Derate < 180VAC)	48 VDC
FMP20.24G	2000	92.5%	85 – 300 VAC (Derate < 180Vac)	24 VDC
FMD15.24	1500 W	91%	48 VDC	24 VDC



# Guardian Hybrid: Field



OVER  
**3000**  
SYSTEMS DEPLOYED



Integration example:  
Solar hybrid in MINI PODS





# DISTRIBUTION PANELS



## Distribution Panels

